

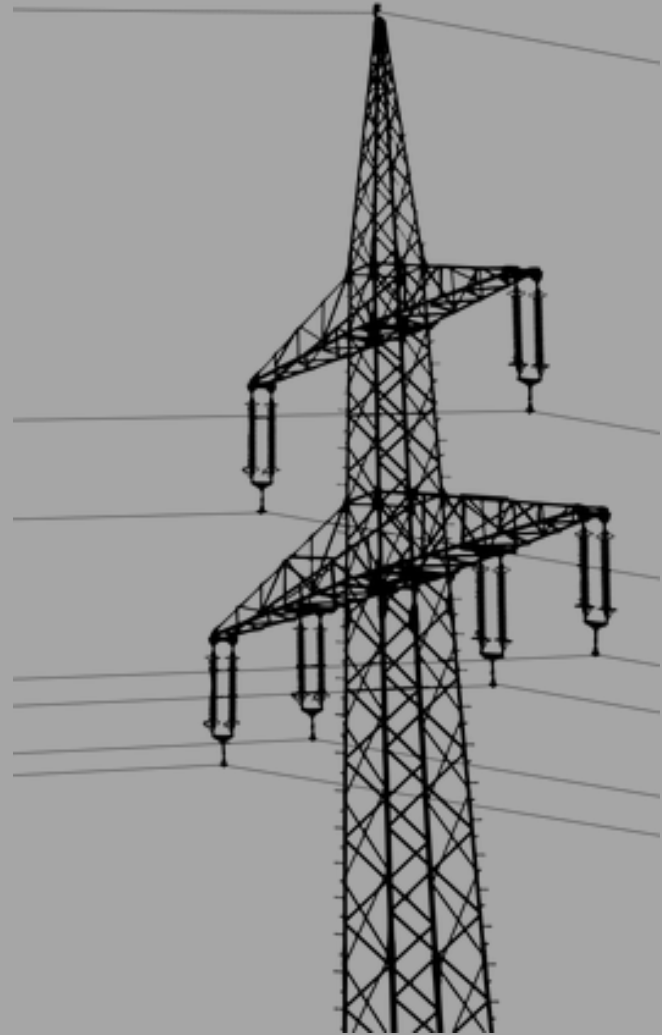
**bulb**



**marble**



**pylon**



turbine



generator



**power plant**

A place where electricity is generated.

**cable**

A thick wire that carries electricity from one pylon to another.

**national grid**

The national grid is the network of cables that send electricity from the power plant around the country to homes and factories.

## renewable resources

Energy sources that will never run out.  
Wind and the sun are renewable  
resources

## non-renewable resources

Energy sources that will run out one day.  
Coal and uranium (for nuclear power) are  
non-renewable resources

## fossil fuels

Coal, oil and gas are fossil fuels. They  
come from animals and plants that died  
a long time ago.

## kinetic energy

Something has kinetic energy when it is moving.

A ball has kinetic energy when someone throws it.

## gravitational potential energy (GPE)

Potential energy is stored energy. An object has GPE when it has been lifted above the surface of the earth.

A ball has GPE when someone picks it up and puts it on the table.